

REPORT PREPARED FOR:

PROJECT#

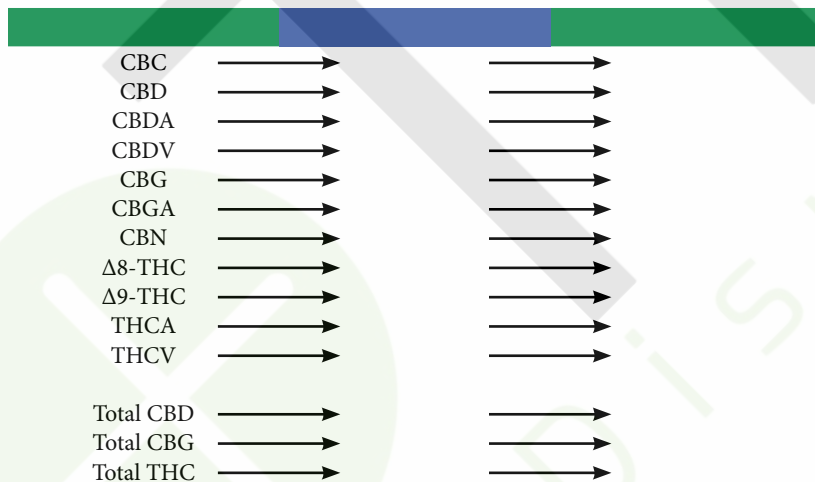
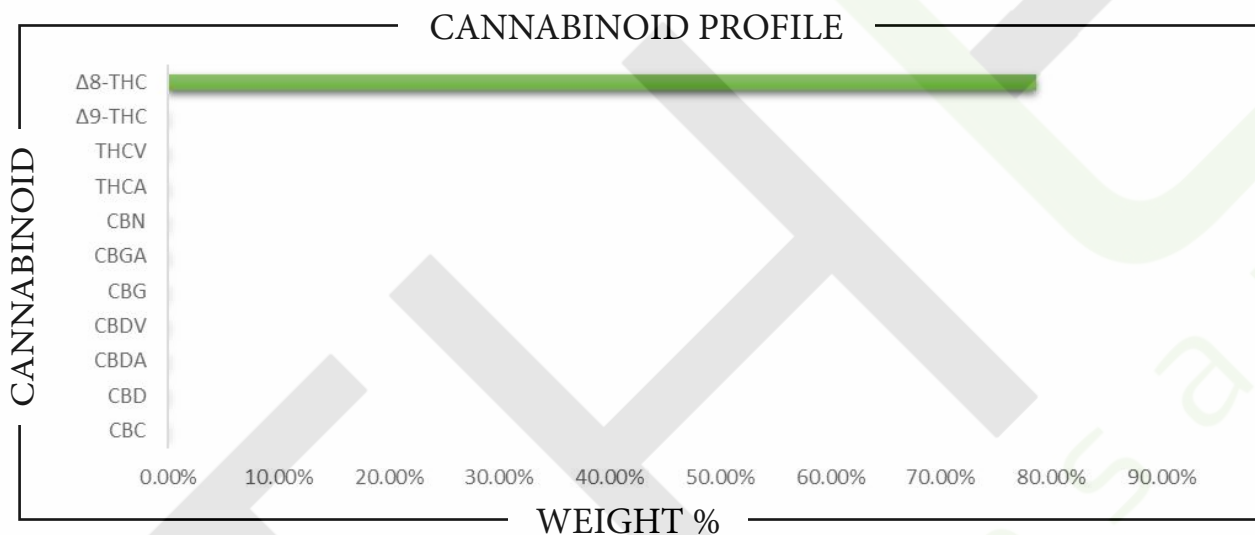
LAB ID

RECEIVED DATE

REPORT DATE



SAMPLE NAME:



Analysis Method: TP-POT-05  
 By HPLC-VWD  
 Total THC = (0.877 x THCA) + Δ9-THC  
 Total CBD = (0.877 x CBDA) + CBD  
 Total CBG = (0.877 x CBGA) + CBG  
 ND = Not Detected

Prepared By:  
 Prep Date:  
 Batch ID:

Analyzed By:  
 Analysis Date:



APPROVED BY:  
**JUSTIN HALL**  
 LAB DIRECTOR

*Justin Hall*  
 SIGNATURE

SIGNED ON

REPORT PREPARED FOR: \_\_\_\_\_

PROJECT# \_\_\_\_\_

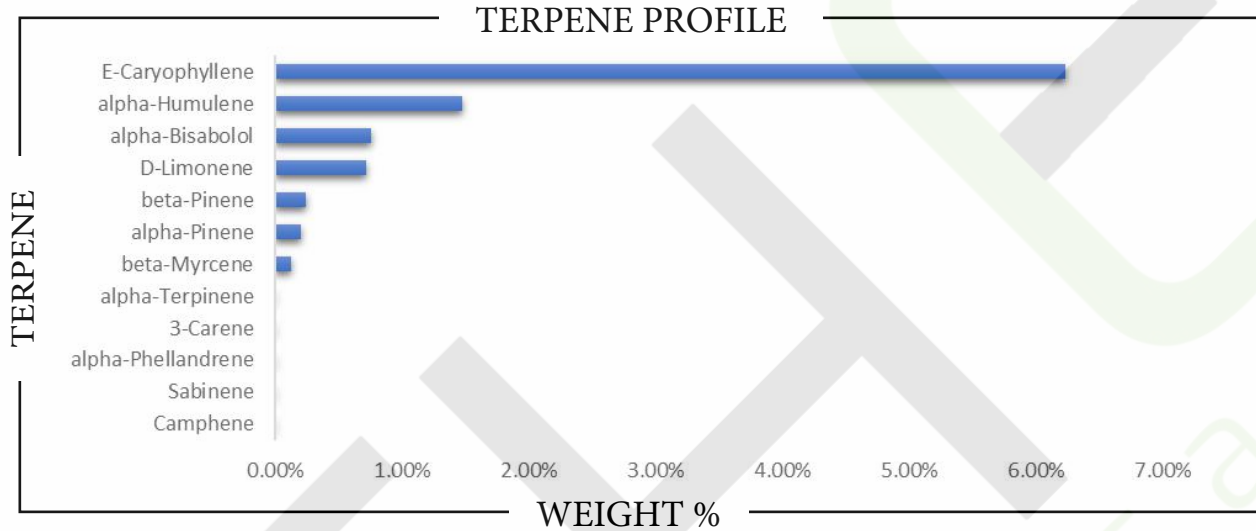
LAB ID \_\_\_\_\_

RECEIVED DATE \_\_\_\_\_

REPORT DATE \_\_\_\_\_

SAMPLE NAME: \_\_\_\_\_

## TERPENES



| TERPENE            | WEIGHT % | TERPENE             | WEIGHT % | TERPENE          | WEIGHT % |
|--------------------|----------|---------------------|----------|------------------|----------|
| alpha-Bisabolol    |          | Caryophyllene oxide |          | Limonene         |          |
| alpha-Cedrene      |          | Cedrol              |          | Linalool         |          |
| alpha-Humulene     |          | Eucalyptol          |          | Nerol            |          |
| alpha-Phellandrene |          | Farnesene           |          | Nerolidol        |          |
| alpha-Pinene       |          | Fenchone            |          | Ocimene          |          |
| alpha-Terpinene    |          | Fenchyl Alcohol     |          | Pulegone         |          |
| beta-Caryophyllene |          | gamma-Terpinene     |          | Sabinene         |          |
| beta-Myrcene       |          | Geraniol            |          | Sabinene hydrate |          |
| beta-Pinene        |          | Geranyl acetate     |          | Terpineol        |          |
| Borneol            |          | Guaiol              |          | Terpinolene      |          |
| Camphene           |          | Hexahydrothymol     |          | Valencene        |          |
| Camphor            |          | Isoborneol          |          |                  |          |
| 3-Carene           |          | Isopulegol          |          |                  |          |

Prepared By: \_\_\_\_\_ Analyzed By: \_\_\_\_\_  
 Prepared Date: \_\_\_\_\_ Analyzed Date: \_\_\_\_\_  
 Analysis Batch: \_\_\_\_\_  
 Analyzed by method TP-TER-01 by HS-GCMS  
 ND = Analyte not detected  
 PPB = Parts per billion

APPROVED BY:  
**JUSTIN HALL**  
 LAB DIRECTOR

*Justin Hall*  
 SIGNATURE

SIGNED ON \_\_\_\_\_