

REPORT PREPARED FOR: \_\_\_\_\_

PROJECT# \_\_\_\_\_

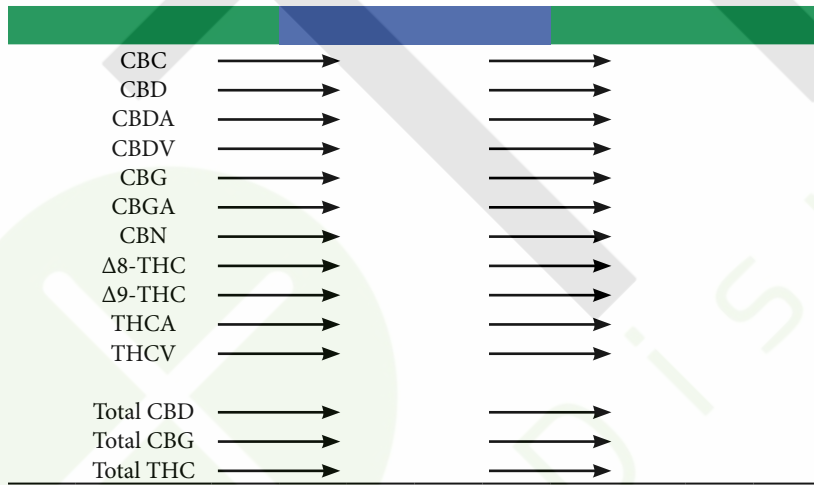
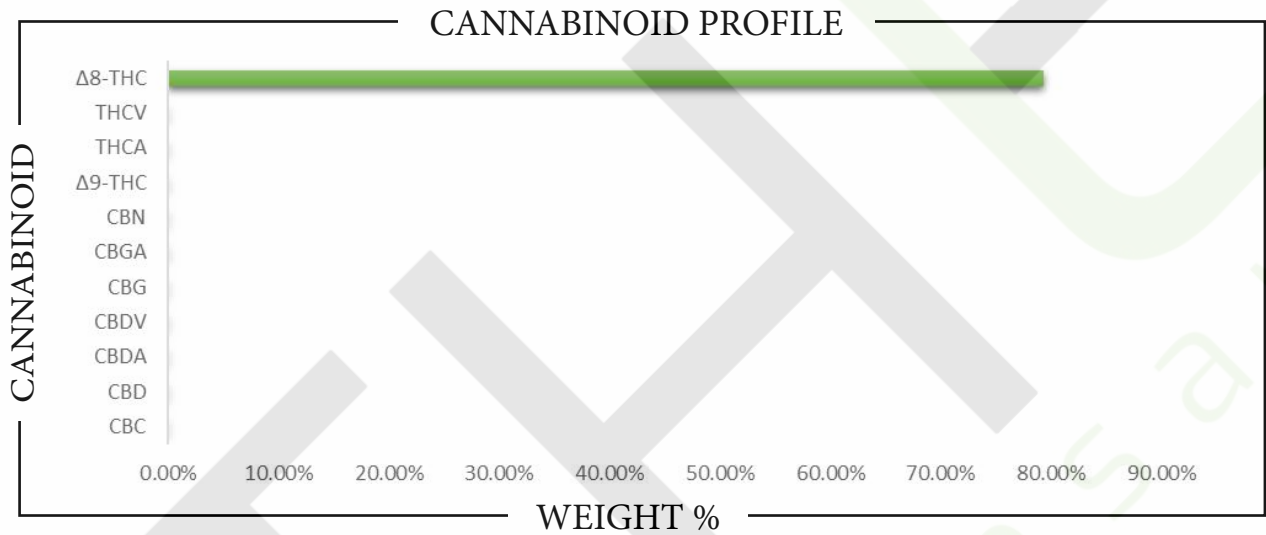
LAB ID \_\_\_\_\_

RECEIVED DATE \_\_\_\_\_

REPORT DATE \_\_\_\_\_



SAMPLE NAME: \_\_\_\_\_



Analysis Method: TP-POT-05  
 By HPLC-VWD  
 Total THC = (0.877 x THCA) + Δ9-THC  
 Total CBD = (0.877 x CBDA) + CBD  
 Total CBG = (0.877 x CBGA) + CBG  
 ND = Not Detected

Prepared By: \_\_\_\_\_  
 Prep Date: \_\_\_\_\_  
 Batch ID: \_\_\_\_\_

Analyzed By: \_\_\_\_\_  
 Analysis Date: \_\_\_\_\_



APPROVED BY:  
**JUSTIN HALL**  
 LAB DIRECTOR

*Justin Hall*  
 SIGNATURE

SIGNED ON \_\_\_\_\_

REPORT PREPARED FOR: \_\_\_\_\_

PROJECT# \_\_\_\_\_

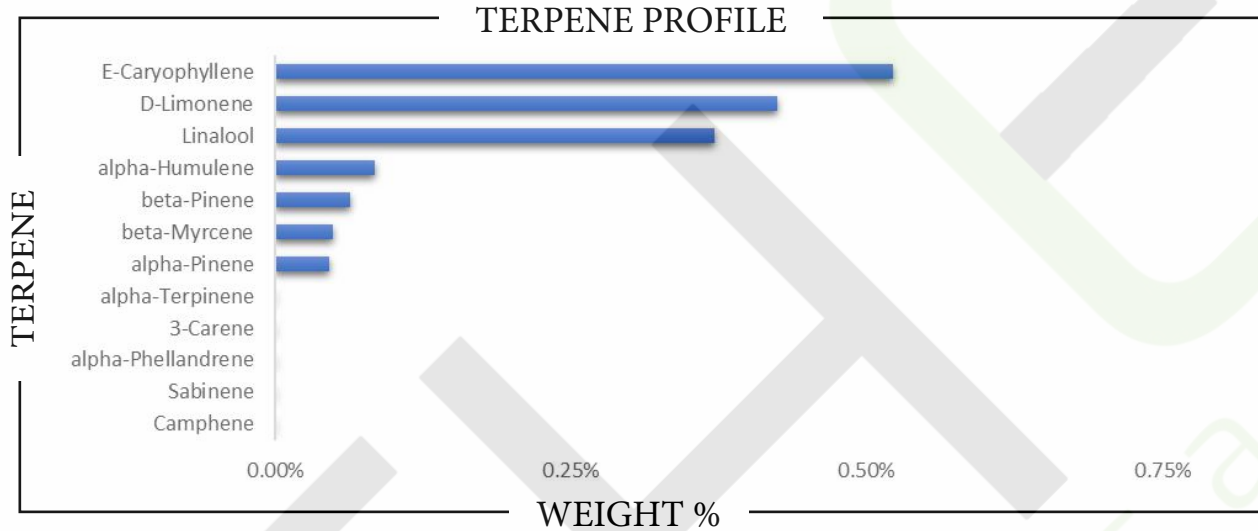
LAB ID \_\_\_\_\_

RECEIVED DATE \_\_\_\_\_

REPORT DATE \_\_\_\_\_

SAMPLE NAME: \_\_\_\_\_

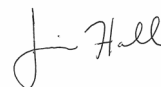
## TERPENES



TERPENE	WEIGHT %	TERPENE	WEIGHT %	TERPENE	WEIGHT %
alpha-Bisabolol		Caryophyllene oxide		Limonene	
alpha-Cedrene		Cedrol		Linalool	
alpha-Humulene		Eucalyptol		Nerol	
alpha-Phellandrene		Farnesene		Nerolidol	
alpha-Pinene		Fenchone		Ocimene	
alpha-Terpinene		Fenchyl Alcohol		Pulegone	
beta-Caryophyllene		gamma-Terpinene		Sabinene	
beta-Myrcene		Geraniol		Sabinene hydrate	
beta-Pinene		Geranyl acetate		Terpineol	
Borneol		Guaiol		Terpinolene	
Camphene		Hexahydrothymol		Valencene	
Camphor		Isoborneol			
3-Carene		Isopulegol			

Prepared By: \_\_\_\_\_ Analyzed By: \_\_\_\_\_  
 Prepared Date: \_\_\_\_\_ Analyzed Date: \_\_\_\_\_  
 Analysis Batch: \_\_\_\_\_  
 Analyzed by method TP-TER-01 by HS-GCMS  
 ND = Analyte not detected  
 PPB = Parts per billion

APPROVED BY:  
JUSTIN HALL  
 LAB DIRECTOR



SIGNATURE

SIGNED ON